

# DODGE RAM

BATTERY POWERED RIDE-ON



## OWNERS MANUAL

Read and understand this entire manual before using!

Please keep this manual for future reference as it contains important information.



### WARNING:

- **CHOKING HAZARD!** Not suitable for children under 3 years.
- **ADULT ASSEMBLY REQUIRED.**

## About Your New Vehicle

On the purchase of your new Ride-On.

This ride-on car will provide your child with many miles of riding of enjoyment. To help assure you and your rider a safe ride we ask you to please read this manual carefully, and keep it for future reference.

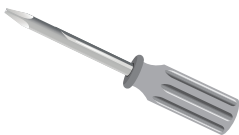
### Specification

<b>Suitable age:</b>	3+ years
<b>Battery:</b>	12V4.5AH*1 / 12V7AH*1 / 12V10AH*1
<b>Charge time:</b>	8-12 hours
<b>Charge:</b>	Input: 110-120V~50/60Hz or 100-220V~50/60Hz output: DC12V500mA (or DC15V500mA) / DC12V1000mA (or DC15V1000mA)
<b>Load capacity:</b>	under 35 kg
<b>Size of car:</b>	113 x 61 x 57 cm
<b>Speed:</b>	3.2-6.4 km/h

## Parts List

NO.	PART NAME	Q'TY (PCS)	REMARK
1	Car body	1	
2	Gear box	2	
3	Driving wheel	2	
4	Front wheel	2	
5	Ø10 washer	6	
6	Lock nut	4	
7	Wheel cover	4	
8	Rocker panel	2	
9	Ø4x10 screw	8	
10	Steering wheel	1	
11	M5x35 machine screw	1	Placed on the steering wheel
12	Ø5 nut	1	Placed on the steering wheel
13	Seat	1	
14	Windshield	1	
15	Charger	1	
16	Wrench	2	

### Assembly tools required:



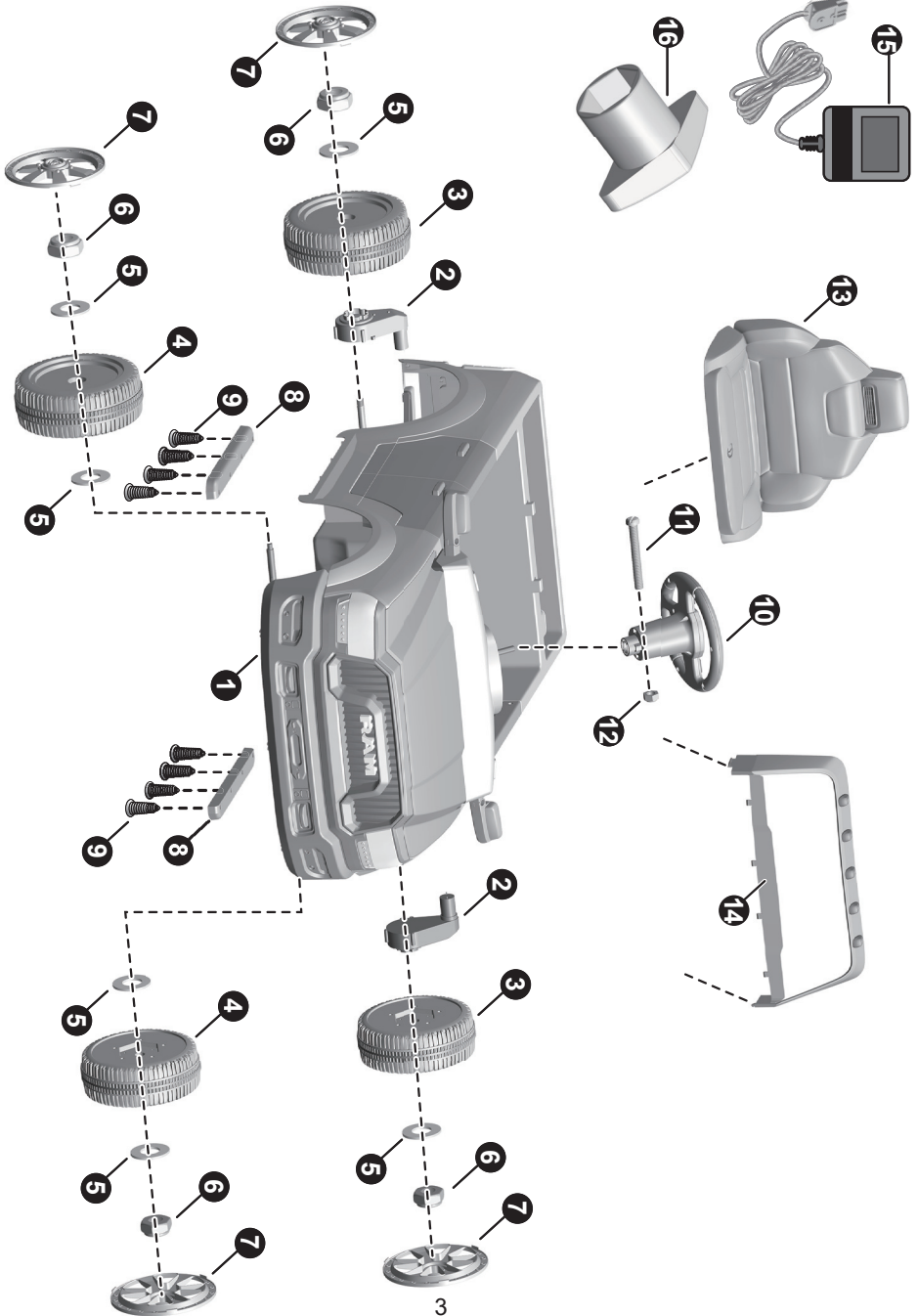
**Screwdriver (not included)**



**Wrench**

# Parts Diagram

HINT: Some parts shown are assembled on both sides of vehicle



## Safety

### **WARNING!**

- **CHOKING HAZARD** - Small parts. Not suitable for children under 36 months. The product contains small parts, keep children away when assembling.
- **ADULT ASSEMBLY REQUIRED.**
- Always remove protective material and poly bags and dispose before assembly.



#### **PREVENT INJURIES AND DEATHS:**

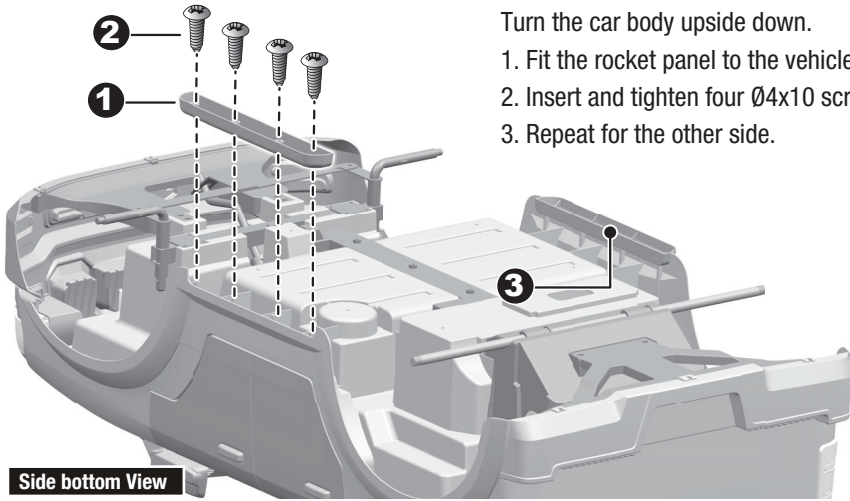
- **NEVER LEAVE CHILD UNATTENDED. ADULT DIRECT SUPERVISION IS REQUIRED.** Always keep child in view when child is in vehicle.
- This toy should be used with caution since skill is required to avoid falls or collisions causing injury to the user or third parties.
- Protective equipment should be worn.
- Not to be used in traffic.
- This toy is unsuitable for children under 36 months due to its maximum speed; Maximum user weight is 35 kg.
- This toy has no brake.



### **BATTERY INFORMATION**

- Non-rechargeable batteries are not to be recharged.
- Rechargeable batteries are to be removed from the toy before being charged.
- Rechargeable batteries are only to be charged under adult supervision.
- Different types of batteries or new and used batteries are not to be mixed.
- Batteries are to be inserted with the correct polarity.
- Exhausted batteries are to be removed from the toy.
- The supply terminals are not to be short-circuited.

## Assembly



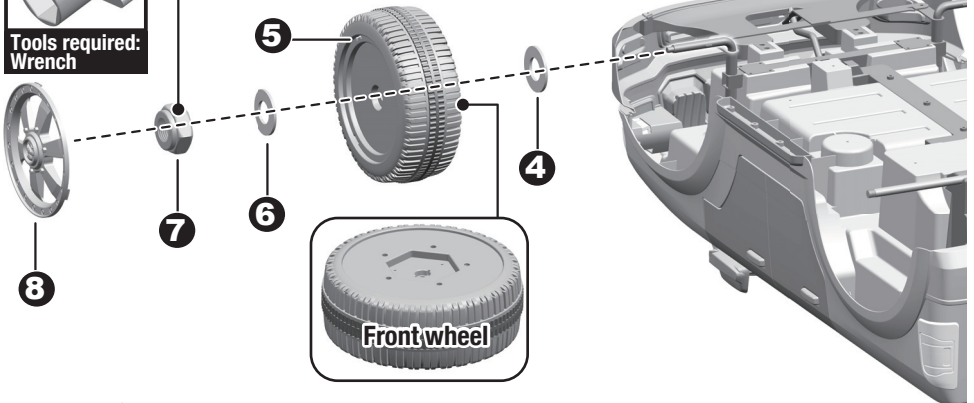
Turn the car body upside down.

1. Fit the rocket panel to the vehicle body.
2. Insert and tighten four  $\text{\O}4 \times 10$  screws.
3. Repeat for the other side.

Side bottom View



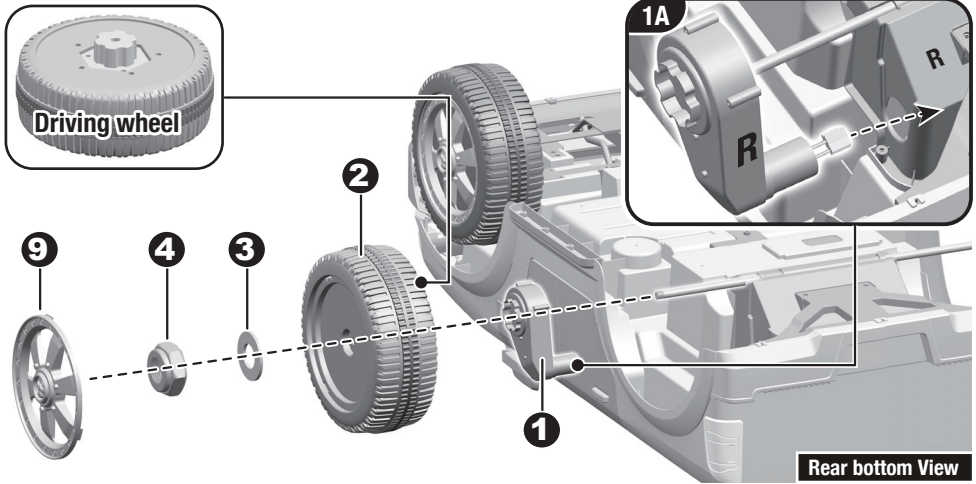
Tools required:  
Wrench



4. Slide a  $\text{\O}10$  washer onto the front axle
5. Slide a front wheel onto the front axle
6. Slide another  $\text{\O}10$  washer onto the front axle
7. Tighten a lock nut to the end of the front axle with a wrench.
8. “Snap” the wheel cover to the wheel.

Repeat for the other front wheel.

# Assembly



1. Slide a gear box onto the rear axle. "R" labeled gear box should be fit to the R side of car body (IMG 1A). "L" labeled gear box should be fit to the L side of car body (IMG 1B). Ensure the motor and the connector on the gear box pass through the larger hole on the car body, and out where the battery sits.

2. Slide a driving wheel onto the rear axle

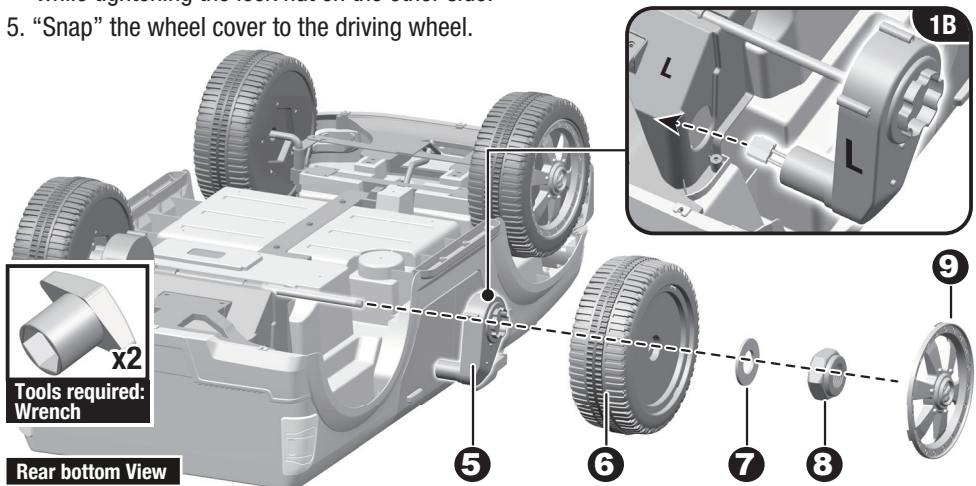
3. Slide a  $\varnothing 10$  washer onto the rear axle

4. Tighten a lock nut to the end of the rear axle with a wrench.

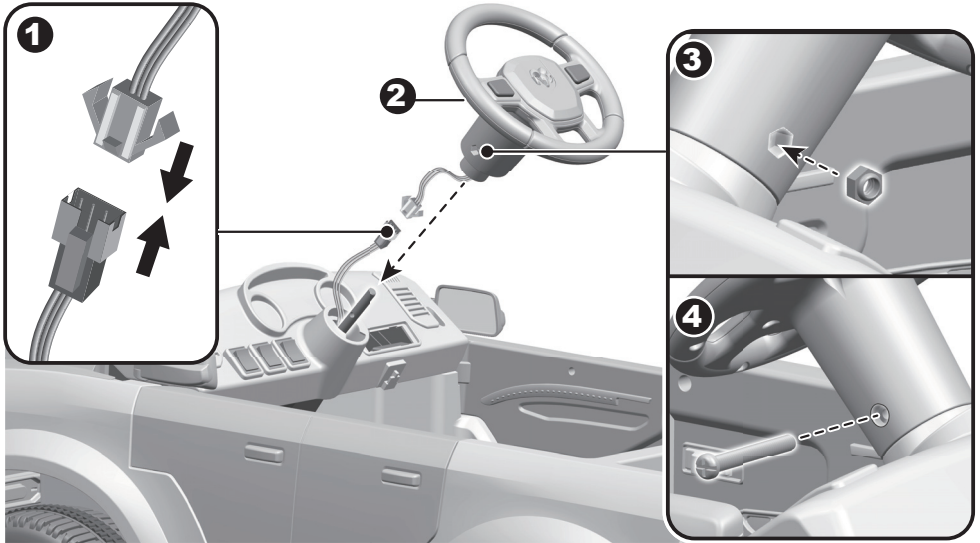
Repeat for the other driving wheel.

● HINT: An extra wrench has been provided to hold the lock nut on the other side of the rear axle while tightening the lock nut on the other side.

5. "Snap" the wheel cover to the driving wheel.

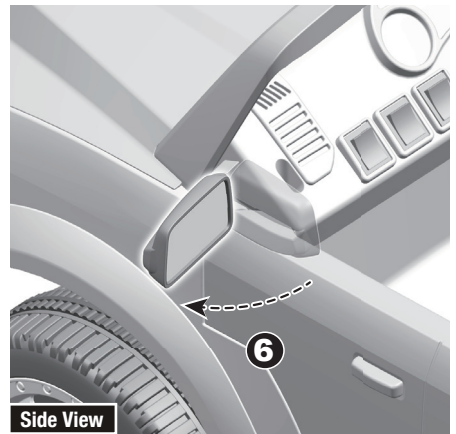
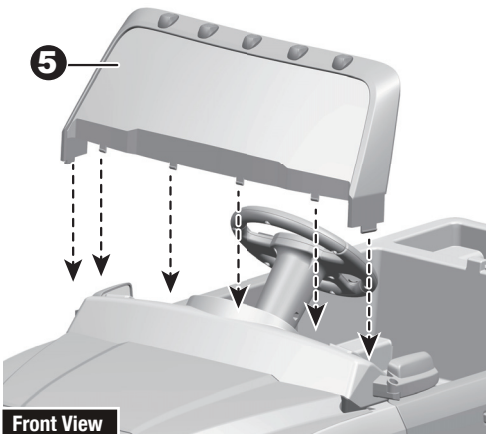


## Assembly

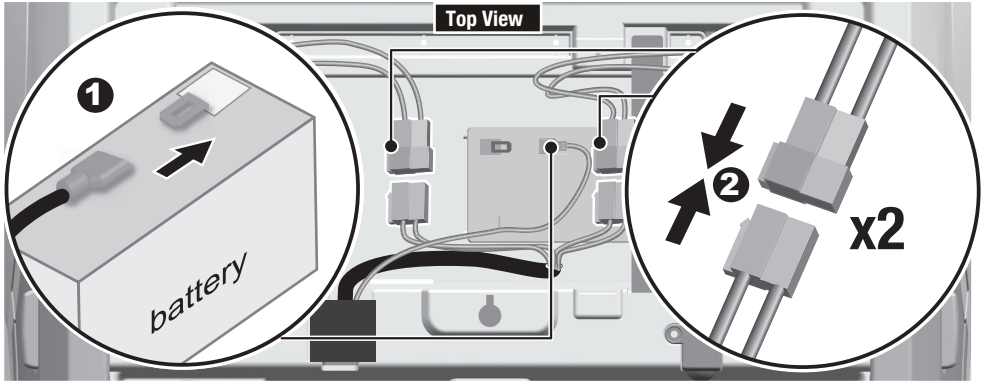


Turn the car body upright.

1. Plug the connector on the steering wheel into the connector on the car body. Then hide the connectors into the hole on the body.
2. Fit the steering wheel onto the end of the steering column.
- 3-4. Insert the  $\varnothing 5$  nut into the hole on the Left side of the steering wheel. Align the holes on each side of steering wheel with the holes at the end of the steering column. Tighten the M5x35 machine screw on the other side of the steering wheel to secure the steering wheel to the steering column.
5. Fit the windshield to the vehicle body, push until you hear it “click” into place.
6. Unfold the mirrors on the both sides of the vehicle body.

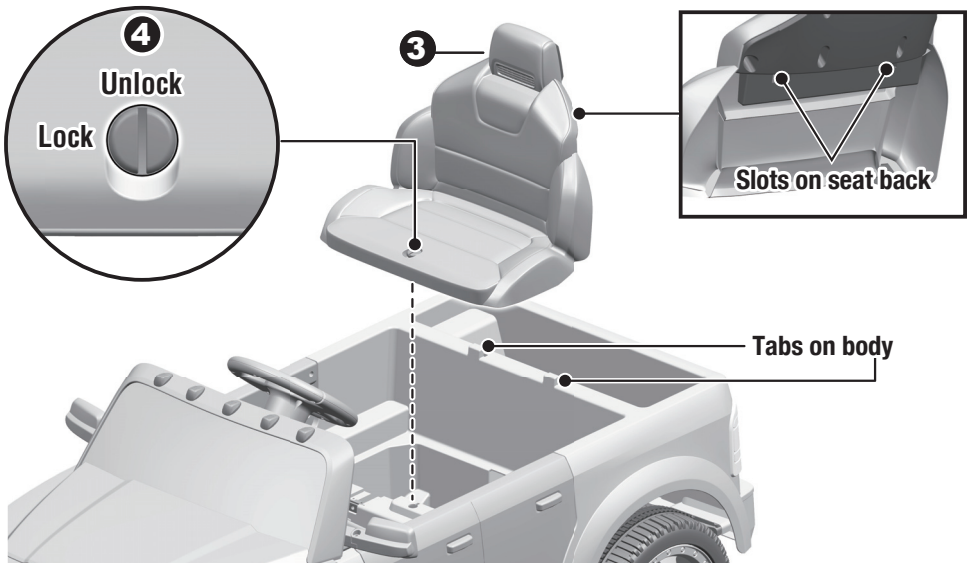


# Assembly

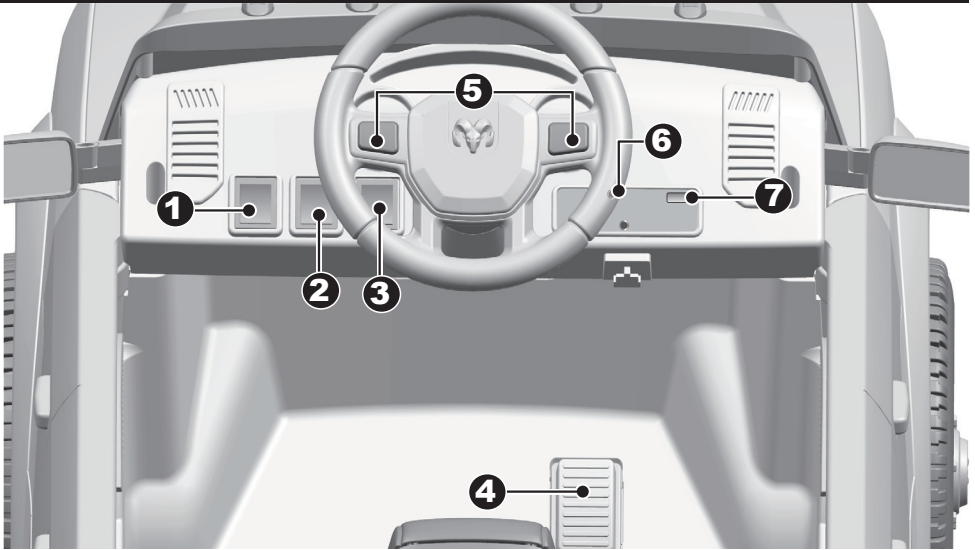


Turn the car body upright.

1. Plug the red battery connector into the terminal on the battery.
2. Plug the gearbox connector with the same wires color of connector at car body.
- 3-4. Fit tabs on car body into the slots on the seat back. And fit the seat to the car body.  
Using a slotted screwdriver(not included) or coin to turn the seat lock to secure the seat to the car body.



## Use



- 1. Power switch:** Turns the product on and off.
- 2. Forward/Reverse switch:** Changes the direction that product moves from forward to reverse.
  - To move the product forward, shift the lever to top position.
  - To move the product backward, shift the lever to down position.
- 3. High/Low speed switch:** Operates the product to move forward in high or low speed.
- 4. Accelerator pedal:** Applies power (speed) to the product.
  - To move the car, press the pedal down.
  - To brake or slow down, release pressure from the pedal.
- 5. Light switch:** Turn the lights on and off.
- 6. MP3 Jack**
- 7. Battery indicator:** Here shows the remaining power of the battery.



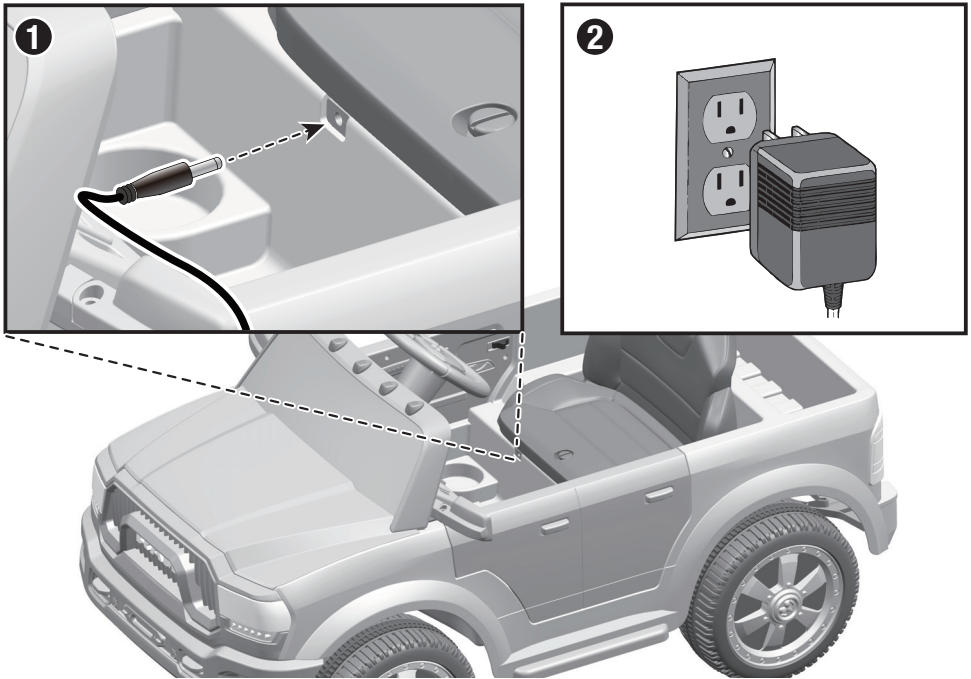
### IMPORTANT!

Always stop vehicle when changing the speed or direction to avoid damage the gears and motor.

## Charging

### **WARNING!**

- **ONLY an adult is allowed charge and recharge the battery!**
  - **This product with Charging Protection: when charging, all functions will be cut off.**
- The POWER SWITCH must be turned in OFF position when charging.
  - Before the first use, you should charge the battery for 4-6 hours. Do not recharge the battery for more than 10 hours to avoid overheating the charger.
  - When the vehicle begins to run slowly, recharge the battery.
  - After each use or once a month minimum recharge time as 8 to 12 hours, less than 20 hours at most.
  - Use only battery(ies) and charger specified by the manufacturer. Using another battery or charger may cause a fire or explosion. Do not use the battery or charger for any other product.
  - If your ride-on with a Digital voltmeter(IF EQUIPPED), the magnitude of voltage will tell you how much power is remaining in the battery when you must recharge the battery. Make sure the vehicle is stop!



1. Plug the charger port into the input socket (below the seat) on the vehicle.
2. Plug the charger plug into a wall outlet. The battery will begin charging.

# Troubleshooting Guide

Problem	Possible Cause	Solution
Vehicle does not run	Battery low on power	Recharge battery.
	Thermal fuse has tripped	The fuse will reset automatically in 20 seconds.
	Battery connector or wires are loose	Check that the battery connectors are firmly plugged into each other. If wires are loose around the motor <b>contact your distributor please.</b>
	Battery is dead	Replace battery, <b>contact your distributor please.</b>
	Electrical system is damaged	<b>Contact your distributor please.</b>
	Motor is damaged	<b>Contact your distributor please.</b>
Vehicle does not run very long	Battery is under charged	Check that the battery connectors are firmly plugged into each other when recharging
	Battery is old	Replace battery, <b>contact your distributor please.</b>
Vehicle runs sluggishly	Battery low on power	Recharge battery, <b>contact your distributor please.</b>
	Battery is old	Replace battery, <b>contact your distributor please.</b>
	Vehicle is overload	Reduce weight on vehicle.
	Vehicle is being used in harsh conditions	Avoid using vehicle in harsh conditions ,see <Safety>.
Vehicle needs a push to go forward	Poor contact of wires or Connectors	Check that the battery connectors are firmly plugged into each other. If wires are loose around the motor, <b>contact your distributor please.</b>
	“Dead Spot” on motor	A dead spot means the electric power is not being delivered to the terminal connection and the vehicle needs repair. <b>Contact your distributor please.</b>
Difficult shifting from forward to reverse or vice-versa	Attempting to shift while the vehicle is motion	Completely stop the vehicle and shift, see <Use Your New Ride On>
Loud grinding or clicking noises coming from motor or gear box	Motor or gears are damaged	<b>Contact your distributor please.</b>
Battery will not recharge	Battery connector or adapter connector is loose	Check that the battery connectors are firmly plugged into each other.
	Charger not plugged in	Check that the battery charger is plugged into a working wall outlet.
	Charger is not working	<b>Contact your distributor please.</b>
Charger feels warm when recharging	This is normal and not a cause for concern	

Completely read through this manual and the troubleshooting guide table before calling. If you still need help resolving the problem **Contact your distributor please.**

## Maintaining

- It is parents' responsibility to check main parts of the toy before using, Must regularly examine for potential hazard, such as the battery, charge,cable or cord, plug, screws are fastening enclosure of other parts and that in the event of such damage, the toy must not be used until that damage had been properly removed.
- Make sure the plastic parts of the vehicle are not cracked or broken.
- Occasionally use a lightweight oil to lubricate moving parts such as wheels.
- Park the vehicle indoors and cover it with a tarp to protect it from wet weather.
- Keep the vehicle away from sources of heat, such as stoves and heaters. Plastic parts may melt.
- Recharge the battery after each use. Only an adult can handle the battery. Recharge the battery at least once a month when the vehicle Raider is not being used.
- Do not wash the vehicle with a hose. Do not wash the vehicle with soap and water. Do not drive the vehicle in rainy or snowy weather. Water will damage the motor, electric system and battery.
- Clean the vehicle with a soft, dry cloth. To restore shine to plastic parts, use a non-wax furniture polish. Do not use car wax. Do not use abrasive cleaners.
- Do not drive the vehicle in loose dirt, sand or fine gravel which could damage the moving parts, motors or the electric system.
- When not using, all the electrical source should be turn off. Turn off the power switch and disconnect the battery connection.

## Fuse

The battery features a thermal fuse with a reset fuse that will automatically trip and cut all power to the vehicle if the motor, electric system or battery is overloaded. The fuse will reset and power will be restored after the unit is turned OFF for 20 seconds and then turned ON again. If the thermal fuse trips repeatedly during normal use, the vehicle may need repair.

To avoid losing power, follow these guidelines:

- Do not overload the vehicle.
- Do not tow anything behind the vehicle.
- Do not drive up steep slopes.
- Do not drive into fixed objects, which may cause the wheels to spin, causing the motor to overheat.
- Do not drive in very hot weather, components may overheat.
- Do not allow water or other liquids to come in contact with the battery or other electric components.
- Do not tamper with the electric system. Doing so may create a short, causing the fuse to trip.

## Disposal Of Battery



- Your sealed lead-acid battery must be recycled or disposed of in an environmentally sound manner.
- Do not dispose of your lead-acid battery in a fire. The battery may explode or leak.
- Do not dispose of a lead-acid battery in your regular, household trash. The incineration, land filling or mixing of sealed lead-acid batteries with household trash is prohibited by law.